

A photograph of a modern building with a glass facade and a large 'VIVANTA' sign in pink neon. The building has a glass entrance area reflecting the sky and palm trees. In the foreground, there is a small pond with palm trees and a few people walking. The sky is blue with some clouds.

//////

# THE PINNACLE OF PROJECT MANAGEMENT CONSULTING SERVICES

Experience the opulence of quality,  
durability & craftsmanship in all our  
undertakings



# GET THE AISP ADVANTAGE, ASAP

3200 Cr  
value managed

25+  
ongoing projects

1500+  
Professional

4 Million+  
Lease/sale  
Sq. Ft. Managed

8+  
Projects Delivered



## SCALE

Your project can be scaled up or down with a proficient team that can adapt to the dynamic of constraint & budget.



## LEVERAGE

Get a higher purchasing power with our ecosystem of vendors and in-house partners.



## INTEGRATE

Get direct connectivity with all vendors, specialists and subject matter experts on-the-go.



## PROCESS

A quick and dedicated workflow that can help you optimise your Go-To-Market time.



# FOUNDERS

At **AISP Project Management Private Limited**, we pride ourselves on having a highly skilled and dedicated team of professionals who are passionate about delivering exceptional project management solutions.



**EXECUTIVE DIRECTOR**  
**RASHMI GAUTAM**  
MASTER IN COMMERCE

**MANAGING DIRECTOR**  
**SANJAY TIWARI**

# OUR TEAM



**RAJEEV SHUKLA**  
GENERAL MANAGER,  
PROJECTS



**MANISH CHOUHAN**  
GENERAL MANAGER,  
PROJECTS



**PRATEEK MURDIA**  
BUSINESS DEVELOPMENT HEAD



**AANCHAL MANOJ SINGH**  
INTERIOR DESIGNER



**RITIK RAWAT**  
MECHANICAL DESIGNER



**SURYA TIWARI**  
ADMIN



**SAIF ALI KHAN**  
HR MANAGER



**SHANU QURESHI**  
PLANNING & BILLING MANAGER



**SATYENDRA HADA**  
PROJECT CO-ORDINATOR



**RAMASHANKAR SONI**  
ACCOUNTS MANAGER



**NITISH KUMAR**  
DOCUMENT CONTROLLER



**G.P. YADAV**  
SR. PROJECT MANAGER



**HARISHANKAR CHOUBEY**  
PROJECT MANAGER  
(INTERIOR & FITTINGS)



**MUJEEB AHMED**  
PROJECT MANAGER



**KRISHNA MALVIYA**  
PROJECT MANAGER



**AJAY KARELE**  
PROJECT MANAGER



**ARUN D. MISTRY**  
PROJECT MANAGER (FINISHING)



**ARVIND PRAJAPATI**  
ASST. PROJECT MANAGER



**SHOBHIT SINGH**  
ASST. PROJECT MANAGER



**RAKESH DAYMA**  
SR. ENGINEER (FINISHING)



**MOHIT MASHANI**  
SR. CIVIL ENGINEER



**RAVI KANT**  
SR. CIVIL ENGINEER



**SURAJ SINGH**  
CIVIL ENGINEER



**RAMNAVAL GAUTAM**  
SR. CIVIL ENGINEER



**DURGESH SINGH**  
SR. PROJECT ENGINEER (CIVIL)



**ANUP KUMAR BIND**  
CIVIL ENGINEER





**SHIVLAL GAUTAM**  
CIVIL ENGINEER



**LOKESH CHOUBEY**  
CIVIL ENGINEER



**AKASH KATYAL**  
CIVIL ENGINEER



**SIDDHESH KUMAR**  
CIVIL ENGINEER



**SAMU K BIND**  
SITE ENGINEER



**LALIT KUMAR SARYAM**  
SITE ENGINEER



**RAMNIWASH CHOUDHARY**  
MEP ENGINEER



**SUDERSHAN PAL**  
MEP ENGINEER



**MUNISH KUMAR**  
MEP ENGINEER



**RAM PYARE VISHWAKARMA**  
MEP ENGINEER



**TUSHAR NAUTIYAL**  
MEP ENGINEER



**SUDHEER SINGH**  
MEP ENGINEER



**SHIVENDRA TIWARI**  
SITE INCHARGE



**AVDHESH DUBEY**  
SITE ENGINEER



**VIKRAM SINGH**  
SITE ENGINEER (CIVIL)



**UMESH MALVIYA**  
SITE ENGINEER (CIVIL)

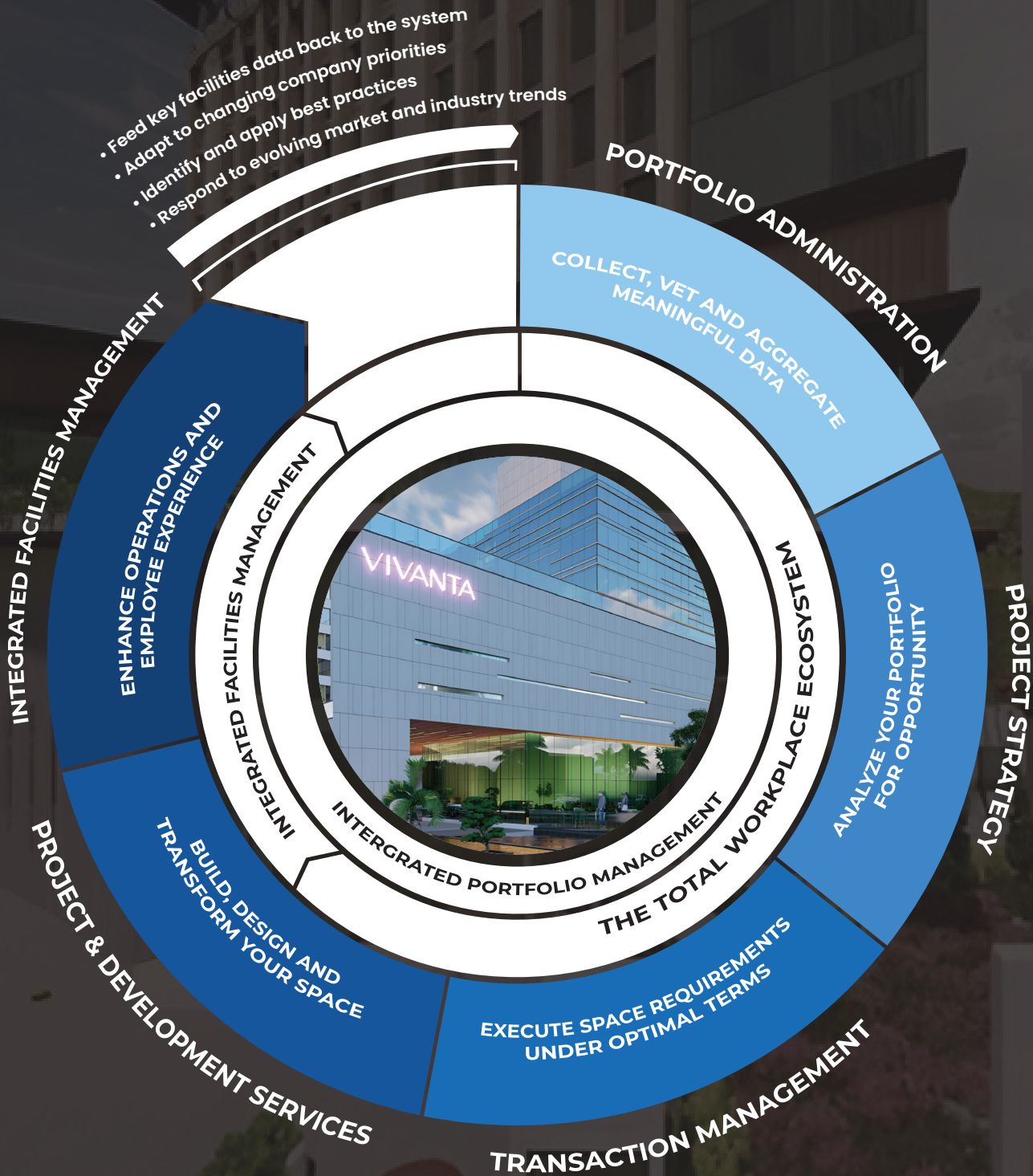


**NIRMAL HARDIYA**  
SITE ENGINEER

# OUR SERVICES

////////

**AISP Project Management Private Limited** specialises in bespoke commercial project management consulting services for businesses, organisations and enterprises across India. With a proven track record, our experienced team ensures seamless project execution.







# FROM THE DESK OF OUR MANAGING DIRECTOR

My humble greetings and salutations to all our prospective partners,

I trust this letter finds you well.

At AISP, we deeply understand the aspirations and challenges that come with any commercial real estate venture. Each project is a blend of hopes, ambitions, and constraints. We are committed to ensuring that every budget, every unique requirement, and every concern finds a tailored resolution with us.

We are proud to emphasize our unwavering commitment to quality control and client satisfaction. Our rigorous quality checks are conducted daily to maintain the highest standards. We prepare and submit detailed weekly and monthly progress reports, keeping you informed of every development. Monitoring the work progress as per the schedule and reporting any delays to management regularly are integral parts of our operational ethos.

Our commitment to technology-driven transformation enables us to deliver projects within strict timelines. We optimize construction costs by adhering to the best industry standards. Our comprehensive mechanical, electrical, plumbing, and fireproofing (MEPF) engineering design services are all provided under one roof. Our multidisciplinary approach bridges the gap between client requirements and efficient planning.

Our team is equipped to handle projects of all sizes and complexities. Our portfolio spans diverse applications in the hospitality industry; and our team finds itself more than capable of working on malls, IT parks, commercial towers, high-rise residential towers, residential townships, sports complexes, and mixed-use buildings. Our scope of work encompasses concept development, feasibility studies, master planning, design services, contract preparation, site visits, and implementation up to commissioning. Sustainability and environmental considerations are at the heart of our design philosophy, ensuring that each project is future-ready.

Client commitment and quality control are sacrosanct for us. We value excellence, integrity, and trust above all. These principles guide our actions and decisions, ensuring that we deliver outstanding results consistently.

Thank you for your continued trust in AISP. We look forward to collaborating with you and turning your real estate aspirations into reality.

Warm regards,



**Sanjay Tiwari**  
Managing Director, AISP Project Management Pvt. Ltd.



**Mr. Sanjay Tiwari**  
Managing Director

# Our clients

VIVANTA

Radisson BLU

  
**Rainbow**  
HOSPITAL FOR WOMEN AND CHILDREN

  
Grand Mercure

  
lemon tree<sup>®</sup>  
HOTELS

GRAND | HYATT

GOLDEN TULIP 

  
AURA

IHCL SELECTIONS<sup>®</sup>

  
WELCOMHOTEL

 Asian Institute of Infertility Management  
Dr. Shefali Jain  
Test Tube Baby Centre

  
ACCOR

 RE:GEN:TA  
BY ROYAL ORCHID HOTELS LTD.

  
PRIDE HOTELS & RESORTS

IHG<sup>®</sup>  
HOTELS & RESORTS

  
DOUBLETREE  
by Hilton™

  
COURTYARD<sup>®</sup>  
Marriott









# PROJECTS COMPLETED BY AISP

////////



**Pride Hotel  
Bhopal**



**Golden Tulip  
Hotel Bhopal**

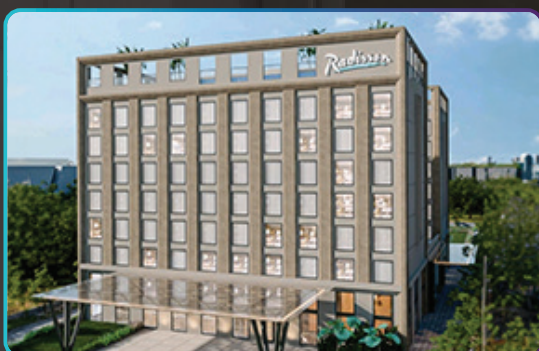


**Central Park  
35, Bhopal**

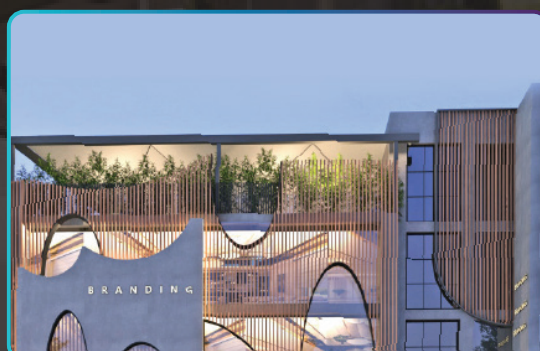


**Asian Hospital  
Indore**

## PROJECTS WITH AISP



**Radisson Blu Ujjain**



**Kabul's  
Commercial Bhopal**



**Novotel Bhopal**



**The Grand Hyatt  
Indore**



**Vivanta Ujjain**



**Welcome by ITC  
Mandav**



**Treasure Park  
Colony, Indore**



**Lemon Tree Ujjain**





**Grand Mercure, Indore**



**Regenta, Bhopal**



**78 Central Park,  
Bhopal**



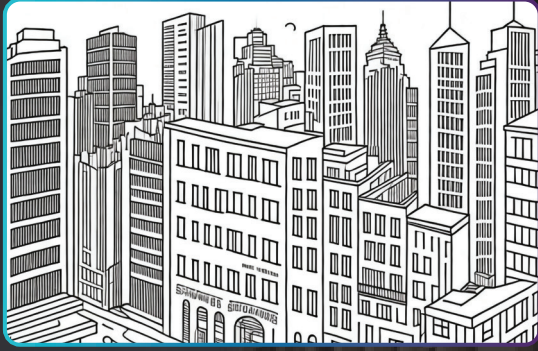
**27 Central Park,  
Bhopal**



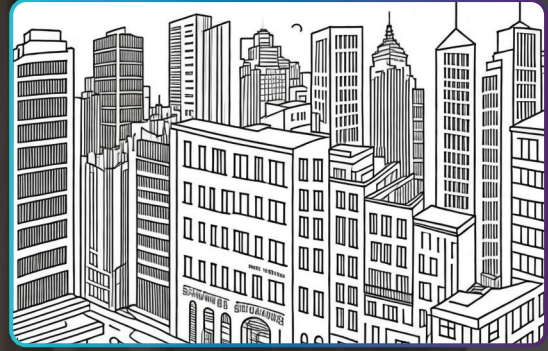
**C21 Mall Bhopal**



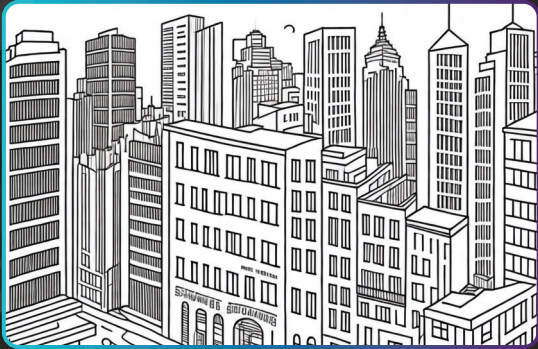
**IHCL Seleqtions,  
Kachchh, Gujarat**



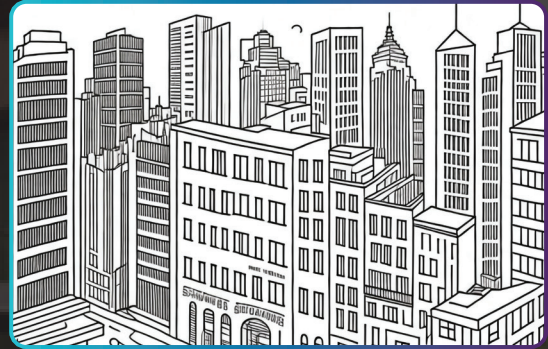
**Kolar School,  
Bhopal**



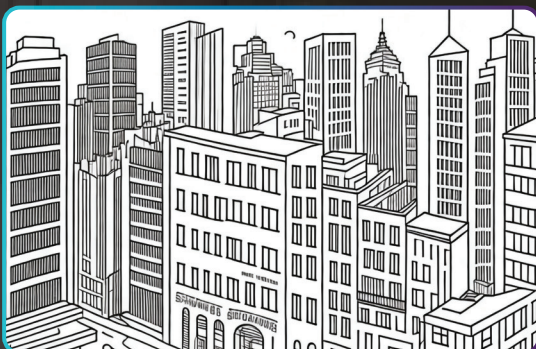
**Rainbow Hospital,  
Bhopal**



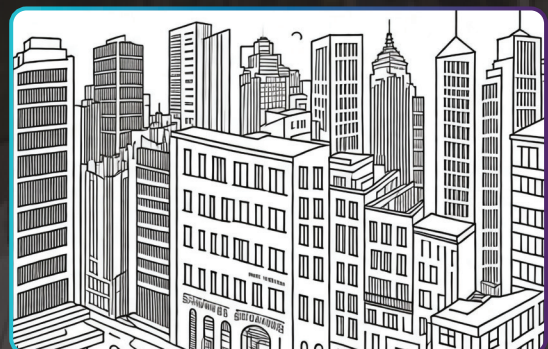
**Double Tree By Hilton,  
Raipur**



**Pride Hotel, Kanpur**



**Gauri Green, Bhopal**



**Courtyard By Marriott,  
Ujjain**



# Thank You

[www.aisppmc.com](http://www.aisppmc.com)

## MP Office

📍 **B 245, Tulsi Nagar, Nipania,  
Indore**

☎ **0731-3599398**

E [admin@aisppmc.com](mailto:admin@aisppmc.com)

## Delhi Office

📍 **1st Floor A-25, Functional Industrial Estate  
For Electronics (FIEE), Okhla Industrial Area,  
Phase-II, New Delhi**

☎ **011-41253004**

**For Projects & Development**

E [prateek@aisppmc.com](mailto:prateek@aisppmc.com)